



# Quick Guide

## STEP Power DCE ST2055

Edition 1

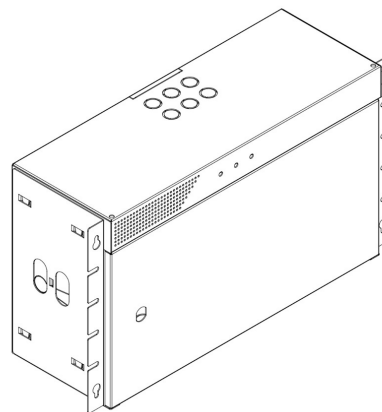


Manual



---

*When it must work*



## Installation

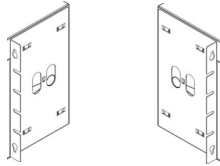
ST2052 can be mounted either on the wall or in a 19" rack.

For rack mounting:

Slide in the mounting plates facing forward until you hear a small click; they are then in the locked position.

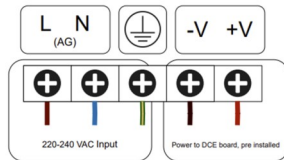
For wall mounting:

Slide in the mounting plates facing backward until you hear a small click; they are then in the



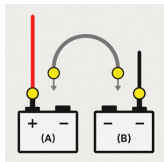
The power supply cannot be started on batteries; startup must be performed with 230 VAC connected. The batteries are not activated until the unit has verified that the correct voltage is present at the battery terminals.

NOTE! Electrical installation must be carried out by a qualified installer or other authorized person in accordance with applicable regulations and standards. Failure to do so may result in a risk of electric shock, fire, and property damage.

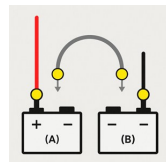


The system is powered by 24VDC. Which means that two 12V 7Ah batteries must be connected per input. Input 1 is for Output 1-2 and Input 2 is for Output 3-4.

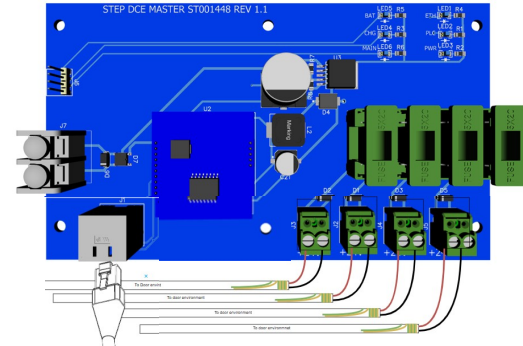
Batteri-ingång 1



Batteri-ingång 2



## Connections



J6 UPS Indicator

PIN	Description
( 1 ) IN	UPS Monitoring

J7 UPS POWER

PIN	Description
( 1 ) +	Power input from UPS unit
( 2 ) -	Power ground input

J1 Ethernet

PIN	Description
RJ45	Ethernet input

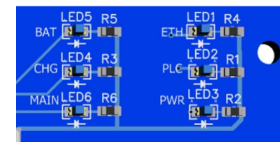
F1,F2,F3,F4 Fuse

PIN	Description
( 1 )	5x20 glas fuse 1,5A

J2,J3,J4,J5 Power output

PIN	Description
( 1 ) +	UPS, DCE Power output
( 2 ) -	Ground

### Status LED indicators



BAT: Indication of battery status

CHG: Indication of charging

MAIN: Indication of incoming 220-240VAC

ETH: Indicate a working Ethernet connection on Lan port. (flashing)

PLC: Indication of communication on Power line (flashing)

PWR: Indicate that this board have power.